

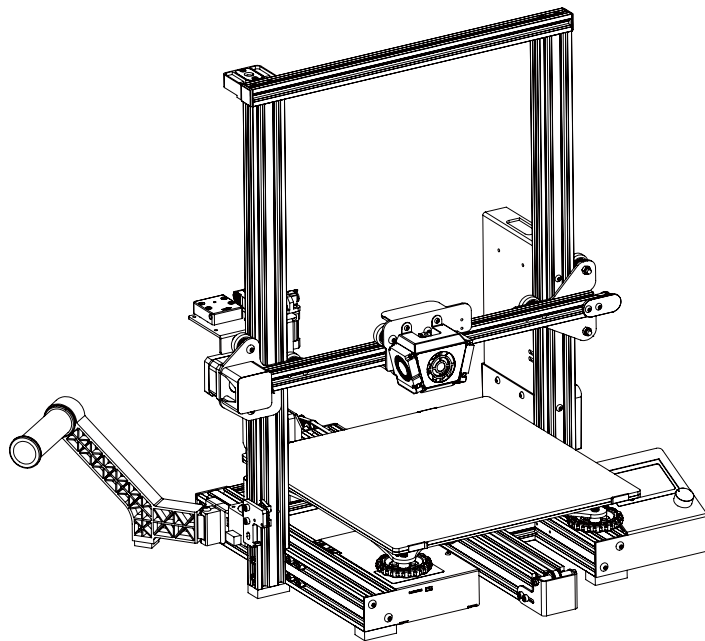


CREALITY

3D Printer User Manual

3D打印机使用说明书

Ender-3 Max



V1.6

Content 目录

Dear Consumers,
Thank you for choosing our products. For the best experience, please read the instructions before operating the Printer. Our teams will always be ready to render you the best services. Please contact us via the phone number or e-mail address provided at the end when you encounter any problem with the Printer.
For a better experience in using our product, you can also learn how to use the Printer in the following ways:
View the accompanied instructions and videos in the Storage card.
Visit our official website www.creality.com to find relevant software/hardware information, contact details and operation and maintenance instructions.

尊敬的创想三维用户：

感谢您选择、使用创想三维的产品。为了您使用方便，请您在使用之前仔细阅读该说明书，并严格按照说明书的指示进行操作。

创想三维团队时刻为您提供优质的服务。在使用过程中无论遇到什么问题，请按照说明书结尾所提供的电话、邮箱与我们进行联系。

为了您能够更好地体验我们的产品，您还可以从以下方式获取设备操作知识：

随机使用说明：你可以在存储卡内找到相关使用说明及视频。

创想三维官网：www.cxsw3d.com 您可以登陆创想三维官网寻找相关软硬件、联系方式、设备操作、设备保养等信息。

A

Notes

使用须知

B

Assemble the 3D Printer

组装 3D 打印机

C

Use the 3D Printer

使用 3D 打印机

Level the Platform

调平平台

Load Filament

装料

Start Printing

开始打印

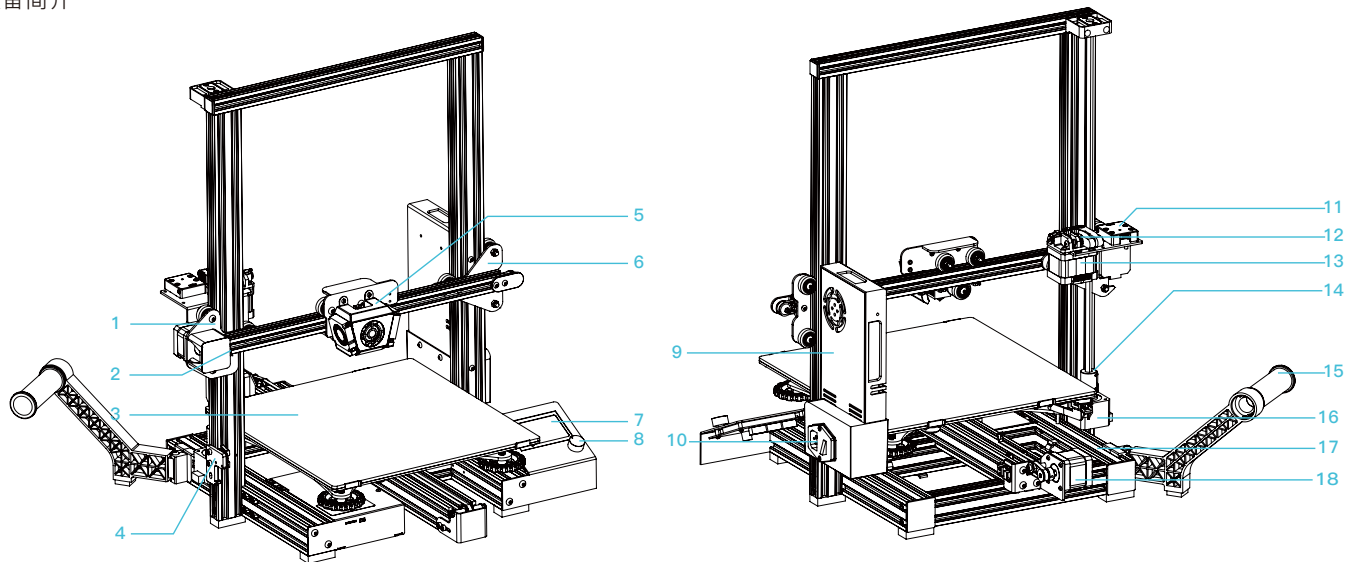
NOTES 使用须知

- 1.Do not use the printer any way other than described herein in order to avoid personal injury or property damage.
- 2.Do not place the printer near any heat source or flammable or explosive objects. We suggest placing it in a well-ventilated, low-dust environment.
- 3.Do not expose the printer to violent vibration or any unstable environment, as this may cause poor print quality.
- 4.Before using experimental or exotic filaments, we suggest using standard filaments such as ABS or PLA to calibrate and test the machine.
- 5.Do not use any other power cable except the one supplied. Always use a grounded three-prong power outlet.
- 6.Do not touch the nozzle or printing surface during operation as they may be hot. Keep hands away from machine while in use to avoid burns or personal injury.
- 7.Do not wear gloves or loose clothing when operating the printer. Such cloths may become tangled in the printers moving parts leading to burns, possible bodily injury, or printer damage.
- 8.When cleaning debris from the printer hotend, always use the provided tools. Do not touch the nozzle directly when heated. This can cause personal injury.
- 9.Clean the printer frequently. Always turn the power off when cleaning, and wipe with a dry cloth to remove dust, adhered printing plastics or any other material off the frame, guide rails, or wheels . Use glass cleaner or isopropyl alcohol to clean the print surface before every print for consistent results.
- 10.Children under 10 years of age should not use the printer without supervision.
- 11.This machine is equipped with a security protection mechanism. Do not manually move the nozzle and printing platform mechanism manually while booting up, otherwise the device will automatically power off for safety.
- 12.Users shall comply with related nation and region' s laws, regulations and ethical codes where the equipment or produced prints by it is used, and users of our product shall not use aforesaid products to print any end-use products,objects,parts or components or any other physical prints that violate the national or regional laws, regulations and ethical codes where herein referred product and produced prints by it is located.

- 1、请勿尝试任何使用说明中没有描述的方法来使用本机，避免造成意外人身伤害和财产损失；
- 2、请勿将本机放置在易燃易爆物品或高热源附近，请将本机放置在通风、阴凉、少尘的环境内；
- 3、请勿将打印机放置在振动较大或者其他不稳定的环境内，机器晃动会影响打印机打印质量；
- 4、建议使用厂家推荐耗材，以免造成挤出头堵塞和机器损坏；
- 5、请勿在安装过程中使用其他产品电源线代替，请使用本机附带的电源线，电源插头需接插在带有地线的三孔插座；
- 6、请勿在打印机工作时接触喷嘴以及热床，以防止出现高温烫伤，造成人身伤害；
- 7、请勿在操作机器时佩戴手套或缠绕物，以防可动部件对人身部件造成卷入挤压和切割伤害；
- 8、在打印完毕后及时利用喷头的余温借助工具将喷头上的耗材清理干净，清理时请勿直接用手触摸喷头，以防出现烫伤；
- 9、常做产品维护，定期在断电的情况下，用干布对打印机做机身清洁，拭去灰尘和粘结的打印材料、导轨上的异物；
- 10、年龄在10岁以下的儿童，请勿在没有人员监督的情况下使用本机，以免造成人身伤害；
- 11、本机设有安全保护机制，请勿在开机状态下手动快速移动喷头及打印平台机构，否则设备会自动断电关机保护；
- 12、使用者应遵守设备打印产品与设备所在地及相应国家及地区法律、法规，恪守职业道德，严禁使用我司产品打印有违设备打印产品与设备所在地及相应国家、地区法律禁止的任何产品或物件。

Product Introduction

设备简介



1 XE-axis kit XE轴组件

2 X-axis limit switch X轴限位开关

3 Print platform 打印平台

4 Z-axis limit switch Z轴限位开关

5 Nozzle kit 喷头套件

6 Z-axis passive block Z轴被动块

7 Screen 显示屏

8 Knob switch 旋钮开关

9 Power supply 电源

10 Power switch and socket 电源开关及插座

11 Filament detector 断料检测

12 Extruder 挤出机

13 E-axis motor E轴电机

14 Coupling 联轴器

15 Material rack and material tube 料架及料管

16 Z-axis motor Z轴电机

17 Machine base 机器底座

18 Y-axis motor Y轴电机

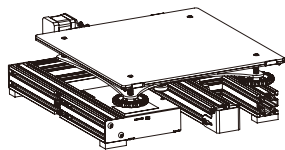
Equipment Parameters

设备参数

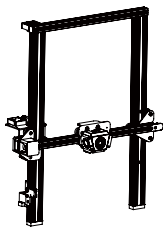
Basic Parameters 基本参数	
Model 型号	Ender-3 Max
Print size 成型尺寸	300x300x340mm
Molding technology 成型技术	FDM
Number of nozzle 喷头数量	1
Layer thickness 打印层厚	0.1mm-0.4mm
Nozzle diameter 喷嘴直径	Standard 标配 0.4mm
XY axis precision 精度	±0.1mm
Filament 打印材料	Φ1.75mm PLA
File format 支持格式	STL/OBJ/AMF
File Transfer 打印方式	USB/SD card 存储卡脱机打印或联机打印
Compatible slicing software 可兼容切片软件	3D Creator Slicer, Repetier-Host, Cura, Simplify3D 创想三维切片软件、Repetier-Host、Cura、Sirnply3D
Power specification 电源规格	Input 输入:AC 115/230V 50/60Hz Output 输出:DC 24V
Total power 总功率	350W
Hotbed temperature 热床温度	≤100°C
Nozzle temperature 喷嘴温度	≤250°C
Resume printing function 断电续打	Yes 有
Filament sensor 断料检测	Standard 标配
Dual z-axis screws 双Z轴丝杆	No 不支持
Language switch 语言切换	English 中文
Computer operating system 电脑操作系统	Windows XP/Vista/7/10/MAC/Linux
Print speed 打印速度	≤180mm/s, 30-60mm/s normally ≤180mm/s,正常为30-60mm/s
BL Touch 自动调平	Optional 选配

Parts List

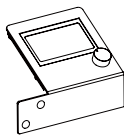
零部件清单



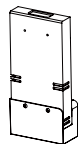
1 Printer base | 底座组件 x 1



2 Gantry frame | 龙门架 x 1



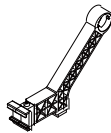
3 Screen kit | 显示屏组件 x 1



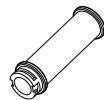
4 Power components | 电源组件 x 1



5 Power cord | 电源线 x 1



6 Rack | 料架 x 1



7 Spool | 料管 x 1



8 Filament | 耗材 x 1



Tool list 工具包清单



9 M4x25 hexagon socket button head screws
M4x25内六角平圆头螺丝



10 M5x10 hexagon socket button head screws
M5x10内六角平圆头螺丝



11 M5x65 socket head cap screws
M5x65内六角圆柱头螺丝



12 Storage card & card reader
存储卡和读卡器



13 Wrenches and screwdrivers
扳手和螺丝刀



14 Metal blade
金属铲刀



15 Diagonal pliers
剪钳



16 Needle
通针



17 Quick connect buckles
快接卡扣



18 Nozzle
喷嘴

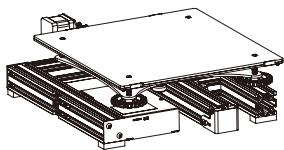
*Tips: the above accessories are for reference only, please refer to the physical accessories!

注意：以上配件仅供参考，请以实物为准！

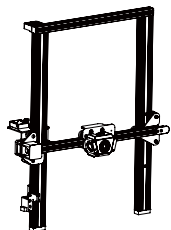
1

Install the Gantry Frame 安装龙门架

Put the gantry on the base, tighten and fix it with 4 M5*65 combination screws.
用4颗M5*65内六角圆柱头螺丝将龙门架放置于底座上,拧紧固定。



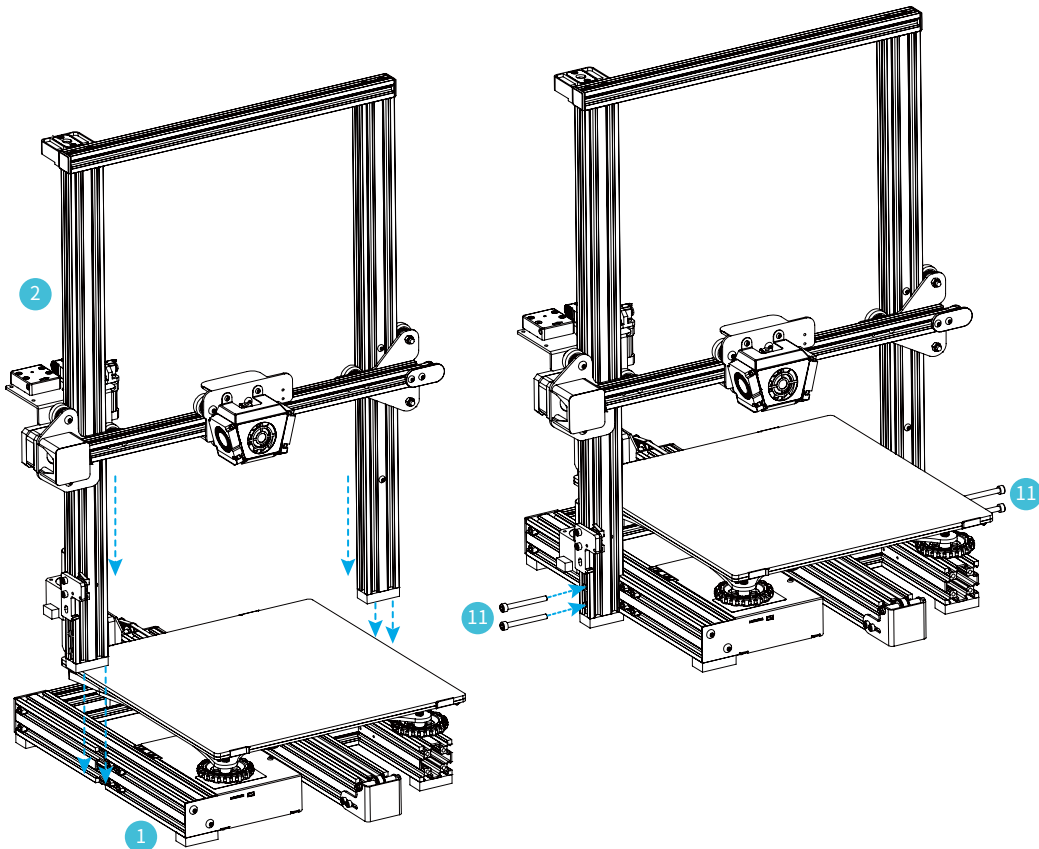
1 Printer base | 底座组件 x 1



2 Gantry frame | 龙门架 X 1



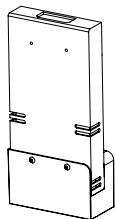
11 M5x65 socket head cap screws
M5x65内六角圆柱头螺丝



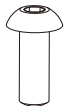
2

Install the Power Supply 安装电源

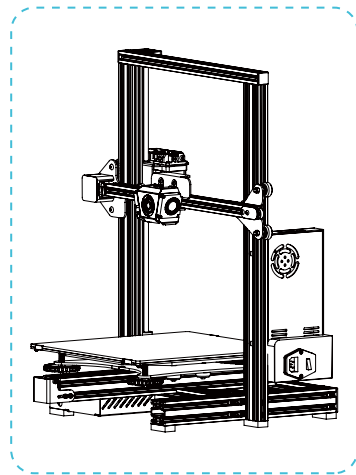
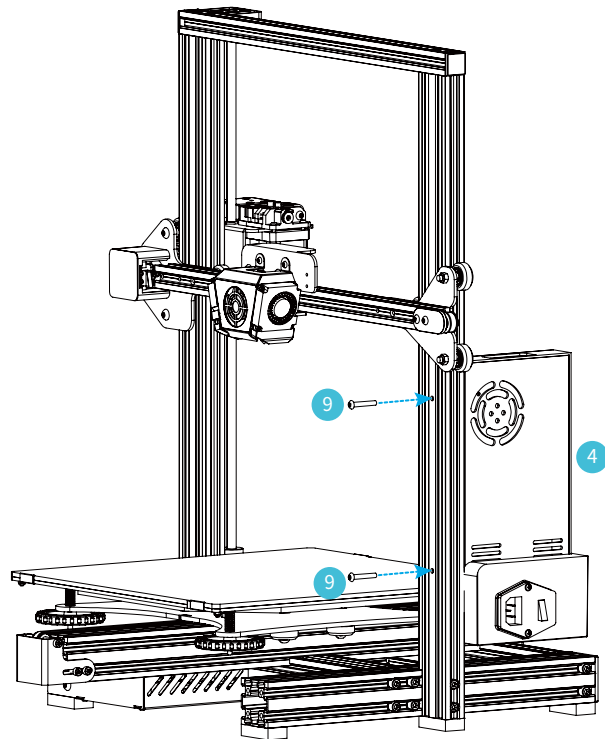
Fix the gantry frame with 2 M4*25 hexagon socket flat head screws.
用2颗M4*25内六角平圆头螺丝置于龙门架上,拧紧固定。



4 Power components x 1
电源组件



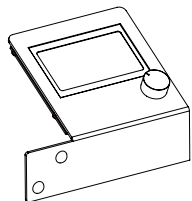
9 M4x25 hexagon socket x 2
button head screws
M4x25内六角平圆头螺丝



3

Install the Screen

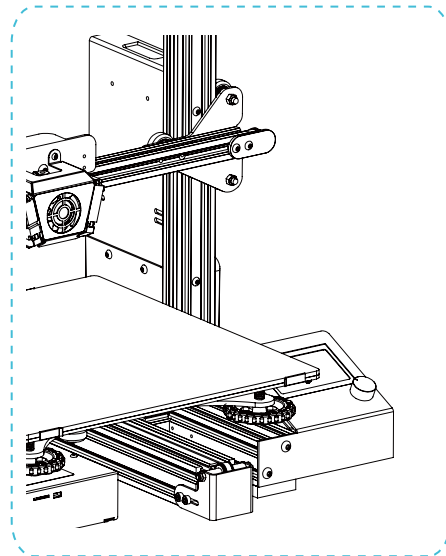
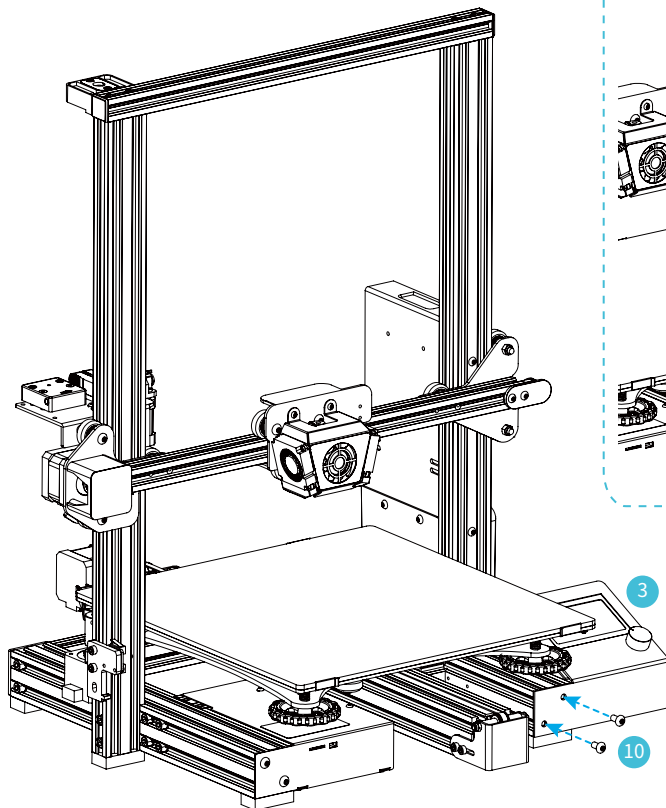
安装显示屏



3 Screen kit | 显示屏组件 x 1



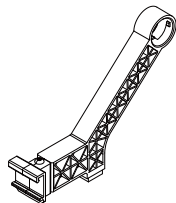
10 M5x10 hexagon socket x 2
button head screws
M5x10内六角平圆头螺丝



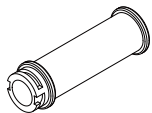
4

Install the Spool Holder

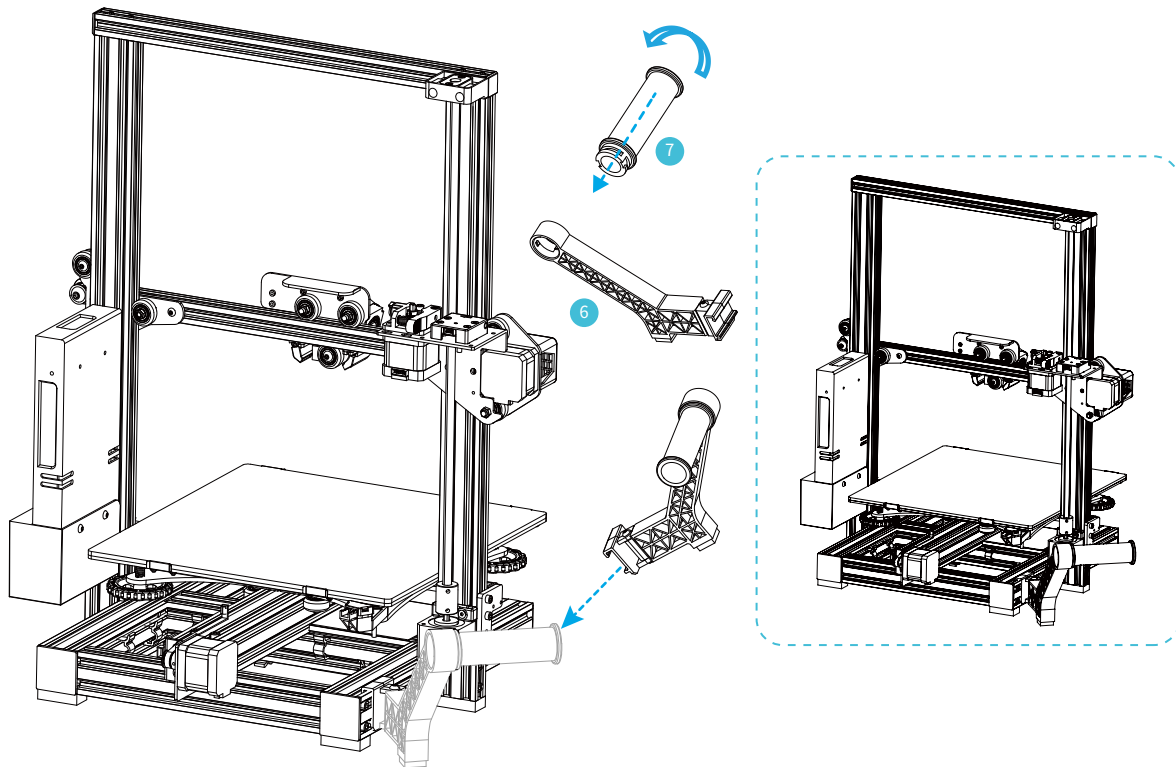
安装料架



6 Rack | 料架 x1



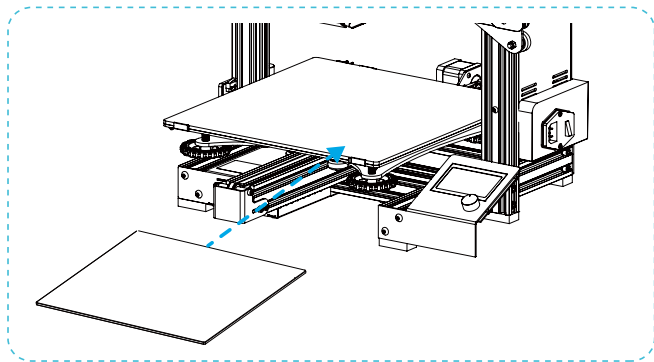
7 Spool | 料管 x1



5

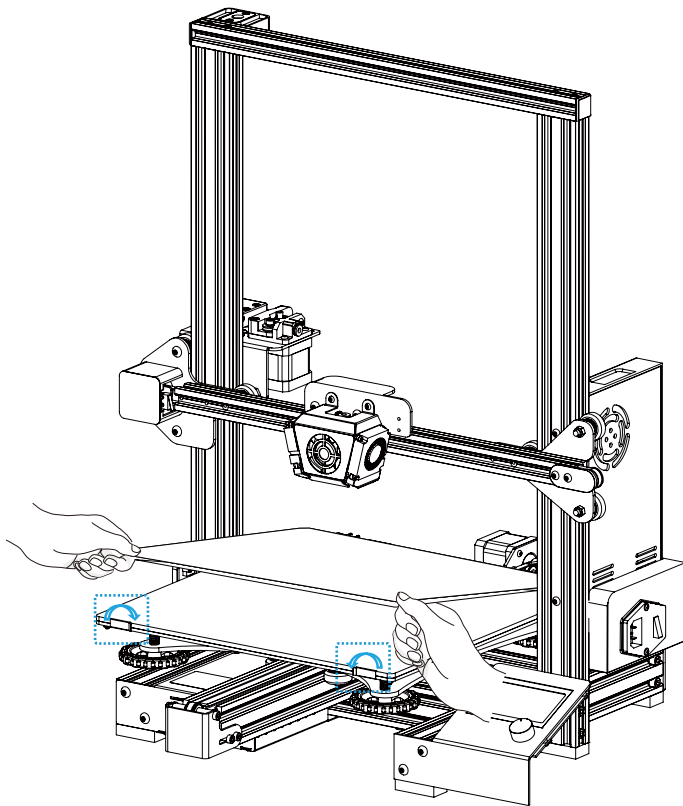
Replace the Platform

更换平台



Power off the printer, the equipment is in shutdown-condition; After the hot bed is cooled, turn off the clamps on the front platform, then the glass board can be replaced.

将打印机断电，设备处于关机状态；热床降温后，转动正面平台板上的夹子，方可进行玻璃板更换。



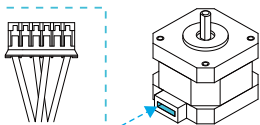
6

Cable Connection 设备接线

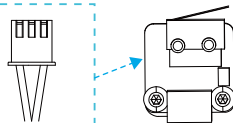
Connect X, E, Z-axis stepper motors according to the yellow label on the 6-pin (4 wires) port. 按照6-pin(4根线)端口上黄色标签提示连接X、E、Z轴步进电机。 Connect X, Z-axis limit switches according to the yellow label on the 3-pin (2wires) port. 按照3-pin(2根线)端口上黄色标签提示连接X、Z轴限位开关。



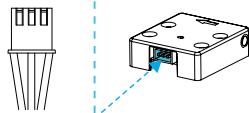
5 Power cord | 电源线 x 1



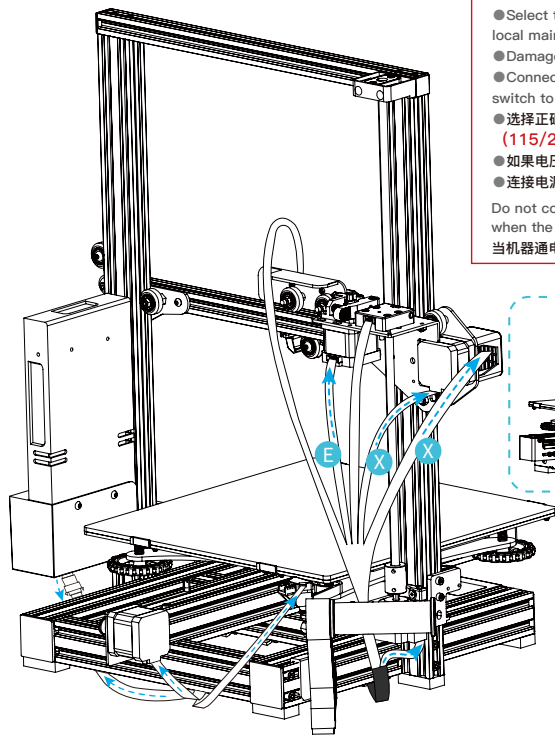
X, E, Z-axis motor port
X、E、Z轴电机接口



X, Z-axis limit switch
X、Z轴限位开关



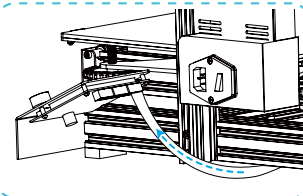
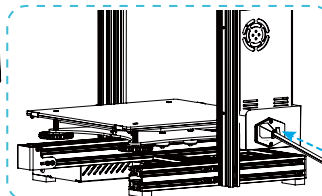
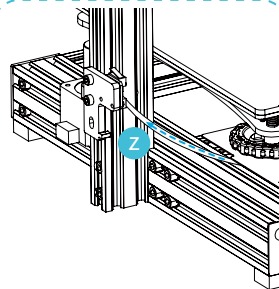
Filament detector
断料检测



Caution

- Select the correct input voltage to match your local mains **(115/230V)**
- Damage can occur if voltage is set incorrectly.
- Connect the power cord and turn the power switch to position 1.
- 选择正确的输入电压以匹配您的本地电源。**(115/230V)**
- 如果电压设置不正确，可能会造成损坏。
- 连接电源线并将电源开关拨至1档即可开机。

Do not connect or disconnect the cables when the machine is powered on.
当机器通电时，请勿连接或断开连接线。



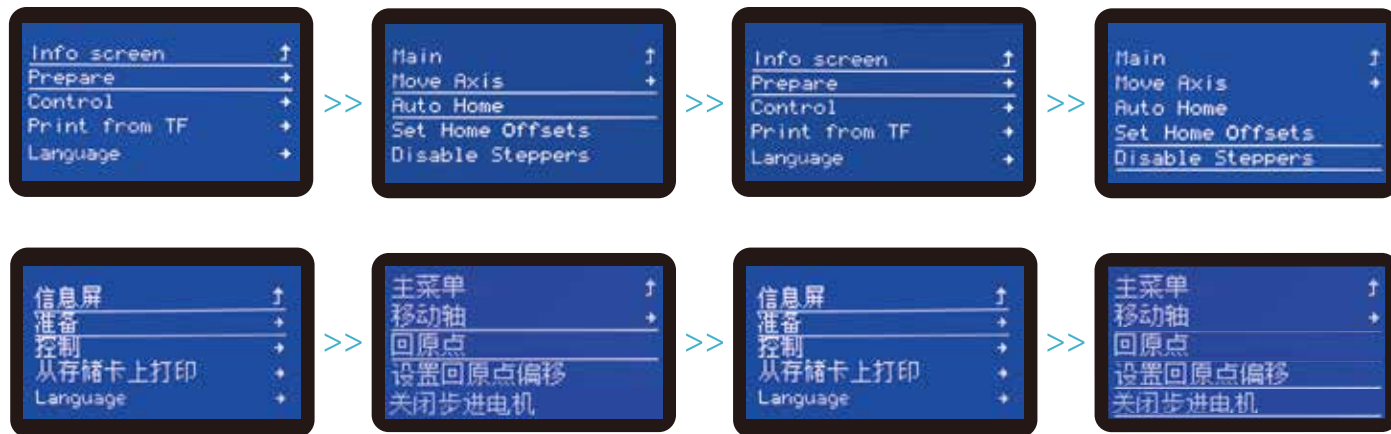
The flat cable must across from under basic profile and behind the material rack, otherwise it will cause the problems of lack of wire length. (as shown in the left picture).

排线必须从底座型材下方及料架后方穿过，否则会导致线路长度不足的问题（如左图所示）。

7

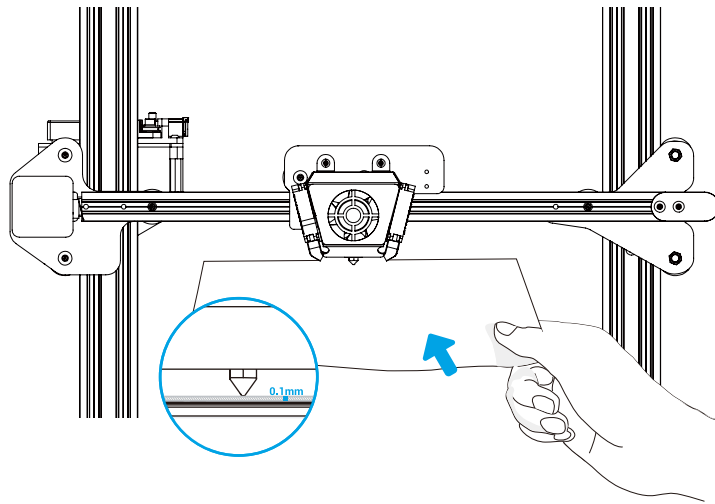
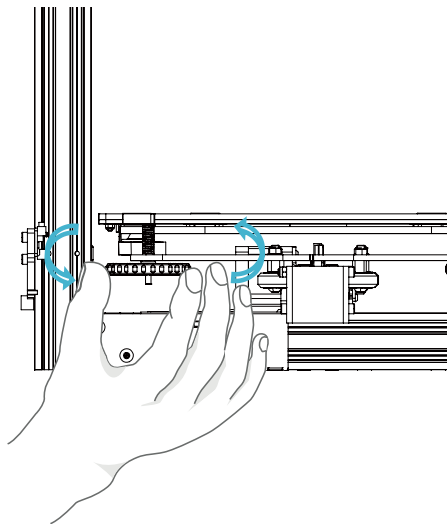
Level the Platform

调平平台



Make sure the nozzle returns to origin and turn off the motor. During the leveling process, please do not touch the Teflon tube and nozzle cable.
 确认喷嘴回到原点，方可关闭电机；调平过程中，请不要触碰铁氟龙管及喷头排线。

1. Move the nozzle near the top of the leveling nut. Screw the nut and adjust the distance between the nozzle and the printing platform. The distance is about 0.1mm. (Thickness of a piece of A4 paper)
 2. We can use a piece of A4 paper to assist in leveling, so that the nozzle can just scratch the A4 paper. Adjust the leveling nuts on the four sides in turn until you can feel the slight resistance from the nozzle when pulling the A4 paper.
 3. Test the distance between the nozzle and the print platform is enough or not. Repeat the above steps 1-2 times if necessary.
- 1.移动喷嘴至调平螺母上方附近。拧动螺母，调节打印平台喷嘴使二者处于好贴合状态，间距约为0.1mm。（一张A4纸的厚度）
 - 2.我们可以利用一张A4纸辅助调平，使喷嘴刚好能在A4纸上产生划痕。依次完成四个边上上调平螺母的调节，不断调整直到在拉动A4纸时能感受到来自喷嘴的轻微阻力。
 - 3.测试平台中间间隙是否合适，如有必要可重复上述步骤1-2次。



		<p>The nozzle is too far away from the platform, so the consumables can not adhere to the platform. 喷嘴离平台太远，耗材无法粘附在平台上。</p>			
		<p>The even filament adheres right on the platform. 耗材挤出饱满均匀，刚好贴在平台上。</p>			<p>The nozzle is too close to the platform, the filaments are not extruded sufficiently, and the nozzle is damaged to result in plug. It's easy to scratch the printing platform. 喷嘴离平台太近，耗材挤出不足，喷嘴出口损伤，造成堵头，刮伤打印平台。</p>

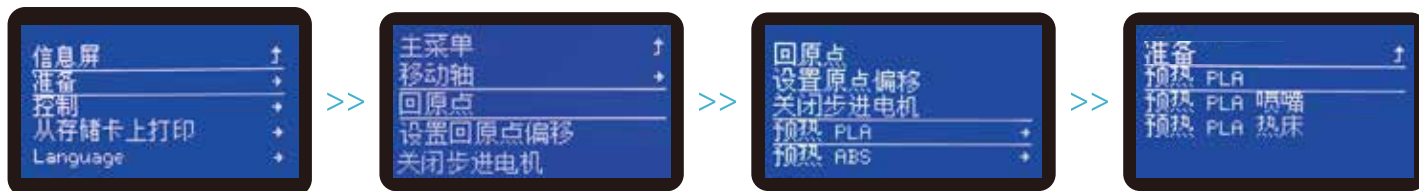
9

Preheat
预热

Method 1



方法一

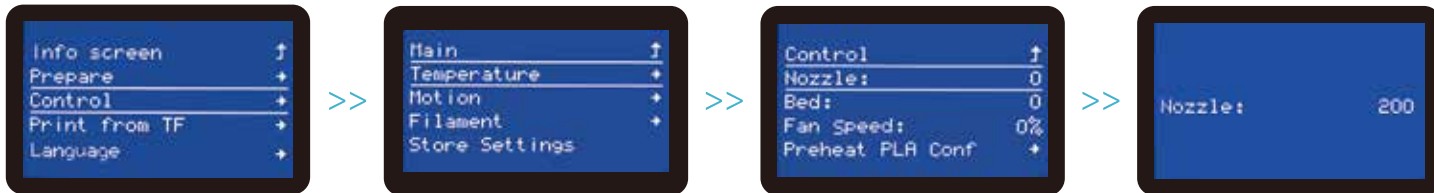


Note: The UI information is only for reference, the actual UI may be different. 注意: 界面仅供参考, 实际以UI为准。

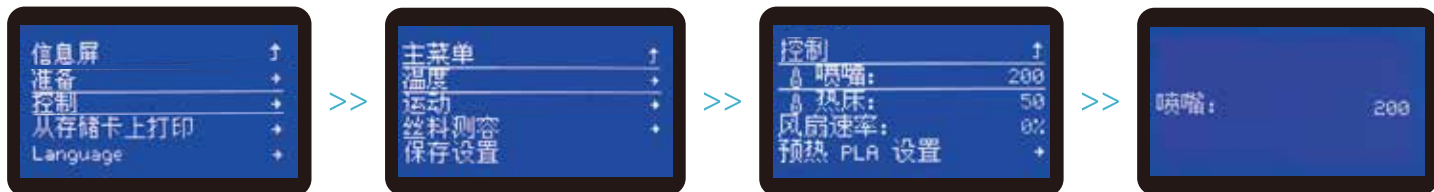
Preheat

预热

Method 2



方法二

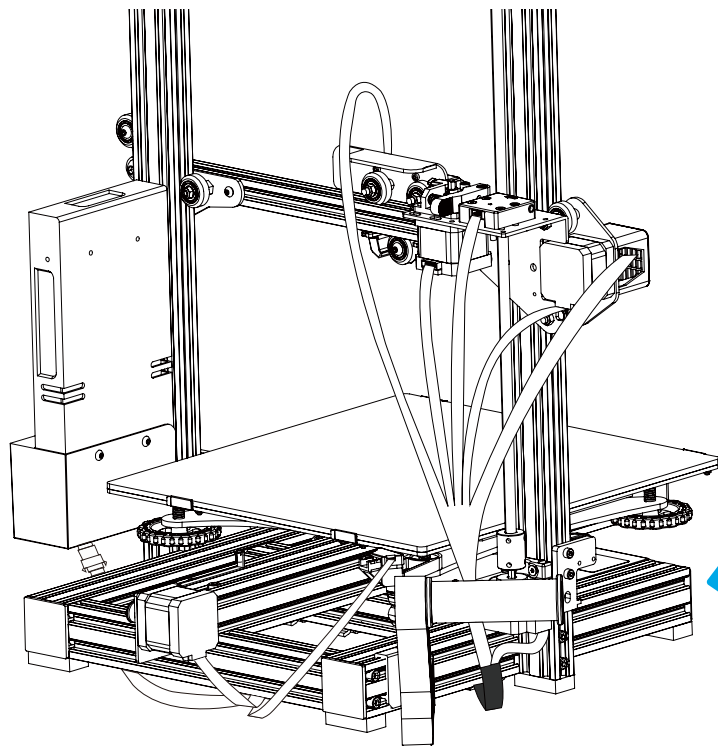


Note: The UI information is only for reference, the actual UI may be different. 注意: 界面仅供参考, 实际以UI为准。

10

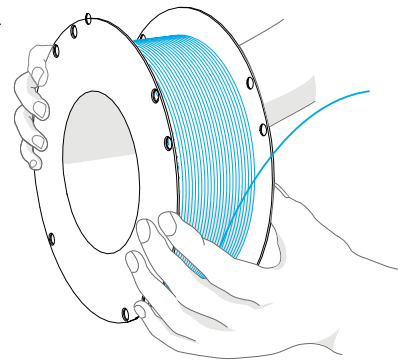
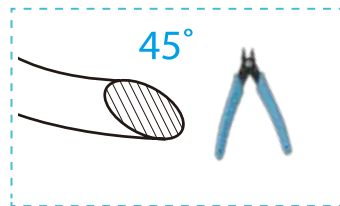
When you wait for the temperature to rise, hang the filament over the filament holder.

当您等待温度上升时,把耗材挂在料架上。



The end of the filament should be placed as shown in the picture to smoothly load filament.

为了顺利完成装料,耗材的末端位置应如图所示。

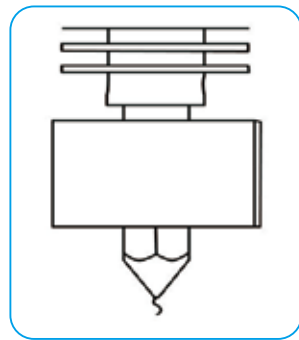
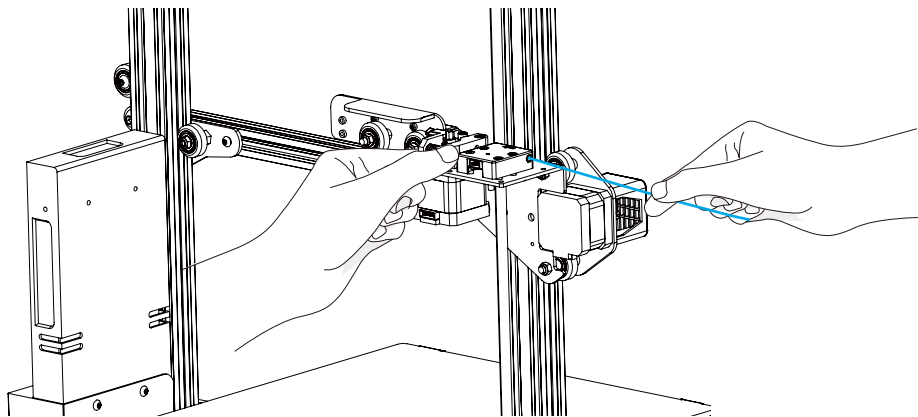


11

Load Filament 装料

When the temperature reaches the target temperature, press the extruder spring, insert the filament into the small hole of the extruder until the position of the nozzle, and waiting to the filament flows out at the nozzle, which means that the filament has been loaded.

当温度达到目标温度时,按住挤出机弹簧,将耗材插入挤出机小孔直至喷嘴位置,等看到喷嘴处有耗材流出即表示耗材已经装载完成。



Tips: How to replace the filament?

1. Cut filament near the Extruder and slowly feed new filament until they are fed into the new filament.
2. Withdraw the filament quickly and feed the new filament after nozzle preheated and filament pushed a little forward.

Tips: 如何更换耗材?

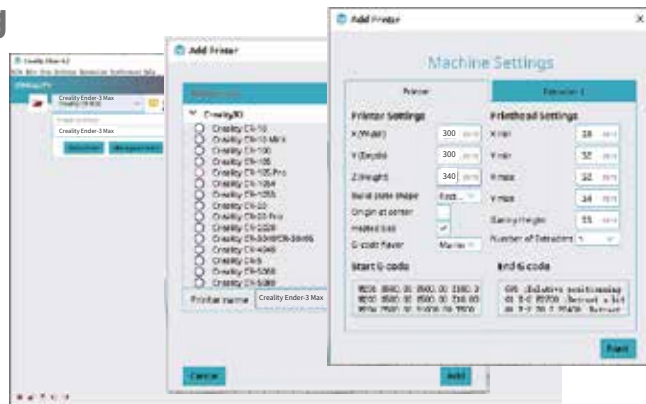
方法一、在靠近挤出机处将耗材剪断,将新耗材缓缓送入,直到耗材被送入导料管为止。

方法二、预热喷嘴后,将耗材往前推进一下后,迅速抽出耗材,将新耗材送入。

12

Start Printing

开始打印



3. Select language→Next→Select your machine→Next→Finish.



3. 依次选择语言→Next→选择对应机型→Next→Finish,完成设置。



1. Double click to install the software. | 安装软件
2. Double click to open the software. | 打开软件



4. Open Creality 3D slicer → Load (Read file) → Select file.
打开创想三维切片软件→Load (读取文件) →选择文件。

13

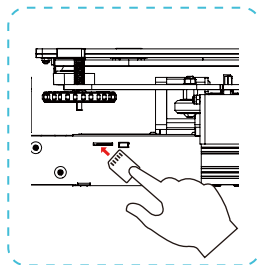
Start Printing

开始打印



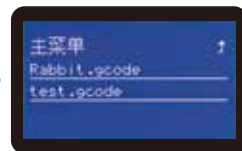
5.Generate G-code, and save the gcode file to storage card.

生成 G 代码→保存到存储卡



6.Insert the storage card → press the knob → select the menu → the file to be printed.

插入存储卡→按下旋钮→选择菜单→要打印的文件



File names must be Latin letters or numbers, not Chinese characters or other special symbols

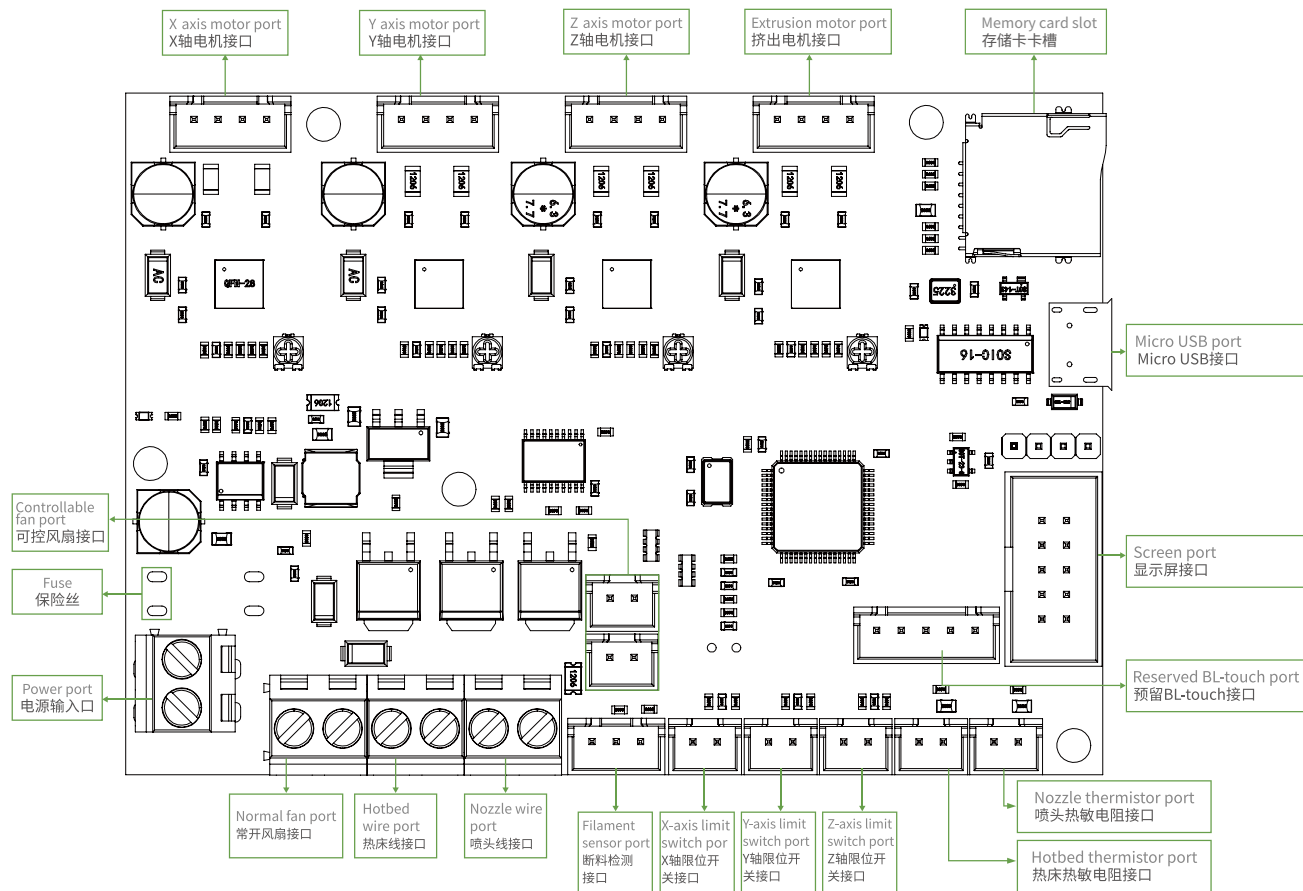
文件名需为拉丁字母或数字, 不能为汉字或其他特殊符号



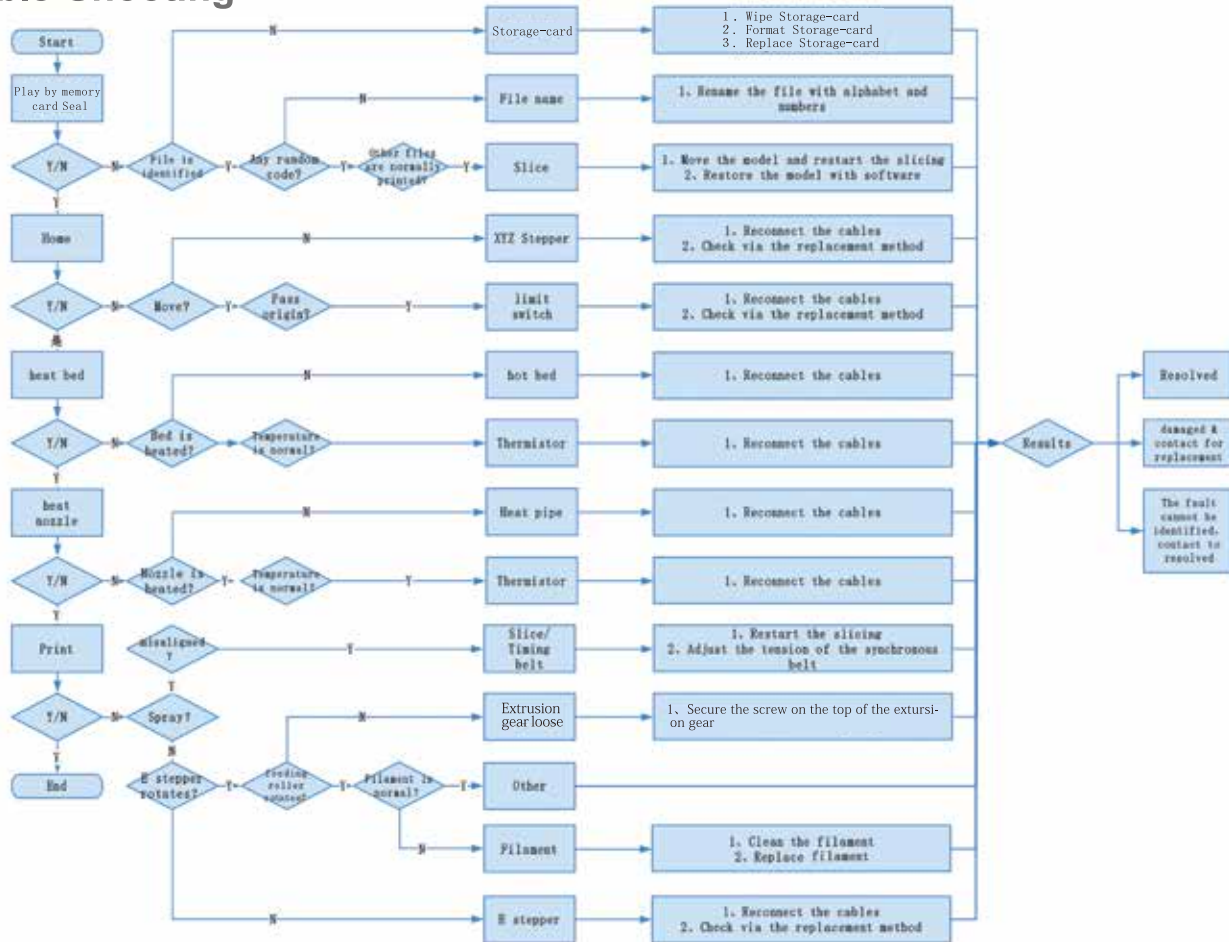
Notes: For details on the software instructions, please refer to the slicing software manual in the memory card!

温馨提示: 软件使用说明详情, 请见存储卡内切片软件使用手册!

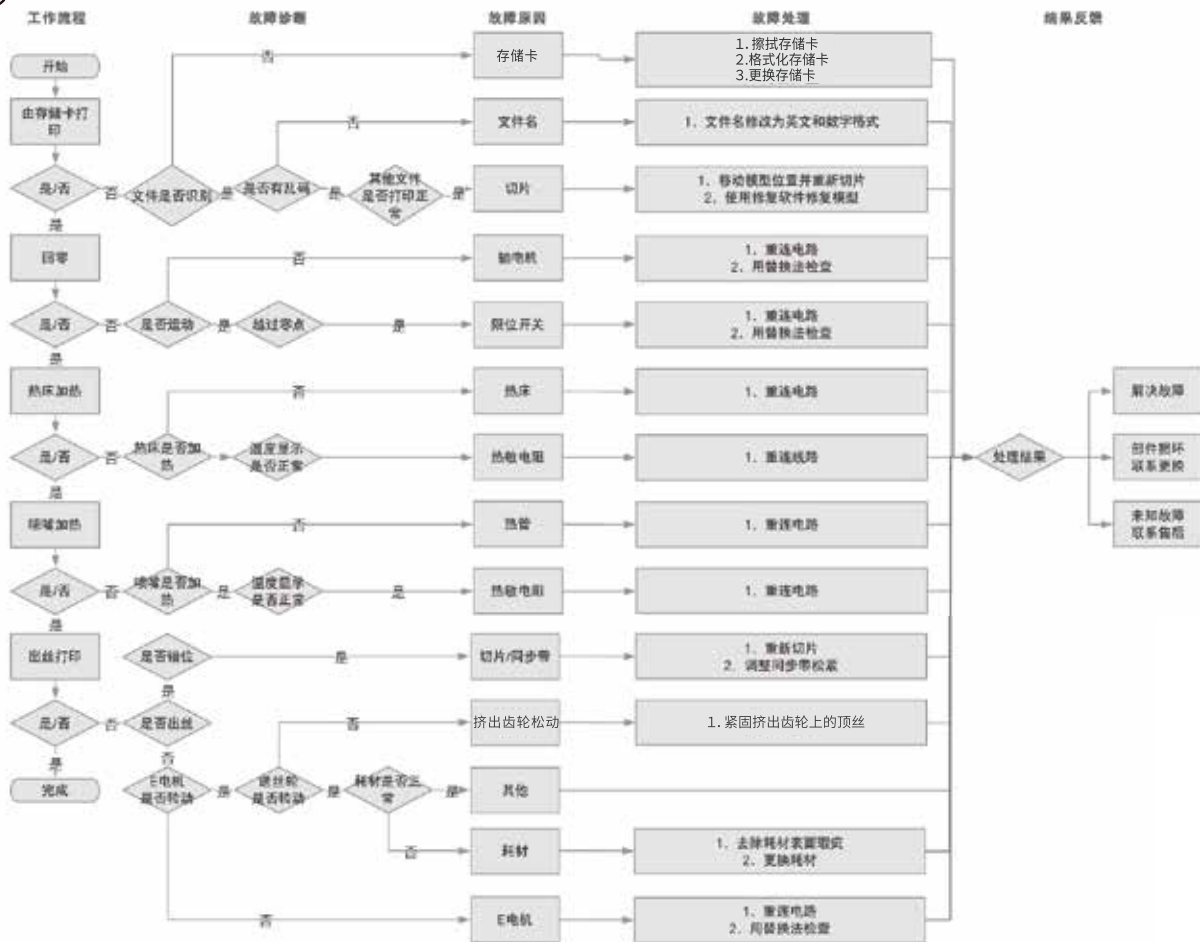
Circuit Wiring 电路接线



Trouble-Shooting



故障检修



Due to the differences between different machine models, the physical objects and the final images can differ. The final explanation rights shall be reserved by Shenzhen Creality 3D Technology Co., Ltd.

因每款机型不同,实物与图可能有所差异,请以实物为准,最终解释归深圳市创想三维科技有限公司所有。



SHENZHEN CREALITY 3D TECHNOLOGY CO.,LTD.

18F, JinXiuHongDu Building, Meilong Blvd., Longhua Dist, Shenzhen, China 518131

Official Website: www.creality.com

Tel: +86 755-8523 4565

E-mail: info@creality.com cs@creality.com



深圳市创想三维科技有限公司

深圳市龙华区民治街道新牛社区梅龙大道锦绣鸿都大厦18F

公司网站: www.cxsw3d.com

服务热线: 400 6133 882

0755-8523 4565

